

# **General Assistance Emergency Housing Update on Sec. C.123, Act 78 (2023)**

**Todd Daloz, Deputy Secretary, Agency of Human Services (AHS)**

**Sue Graff, AHS Field Services Director (Springfield, Brattleboro)**

**Miranda Gray, Deputy Commissioner, Economic Services Division (DCF)**

**Lily Sojourner, Interim Director, Office of Economic Opportunity (DCF)**

**Jillian Niggel, Finance Director, Economic Services Division**

# Households By District

This is the current district data on all households in the GA Housing program as of 2/26/2024.

District Office	Total Eligible Households	Cohort Households*	Categorically Eligible***	Adverse Weather Conditions**
Barre District Office	191	75	16	100
Bennington District Office	195	69	13	113
Brattleboro District Office	229	65	20	144
Burlington District Office	306	92	30	184
Hartford District Office	90	36	9	45
Middlebury District Office	21	6	2	13
Morrisville District Office	30	11	1	18
Newport District Office	21	5	2	14
Rutland District Office	424	124	68	232
Springfield District Office	52	21	8	23
St Albans District Office	73	16	11	46
St Johnsbury District Office	69	7	10	52
<b>Total</b>	<b>1701</b>	<b>527</b>	<b>190</b>	<b>984</b>

## Data Notes

\*Households in the cohort are eligible through 3/31/24

\*\*Households housed through Adverse Weather Conditions are eligible through 3/15/24.

\*\*\*Households categorically eligible are housed for 28 or 84 days. The end date of their eligibility is based on their individual situation. Households that exhaust their 28 or 84 days prior to 3/15/24 will be eligible for housing under Adverse Weather Conditions

# Housing Transitions & Comprehensive Community Response

## Identification:

- AHS Field Directors are training community partners to use risk assessments to identify housing needs.

## Engagement:

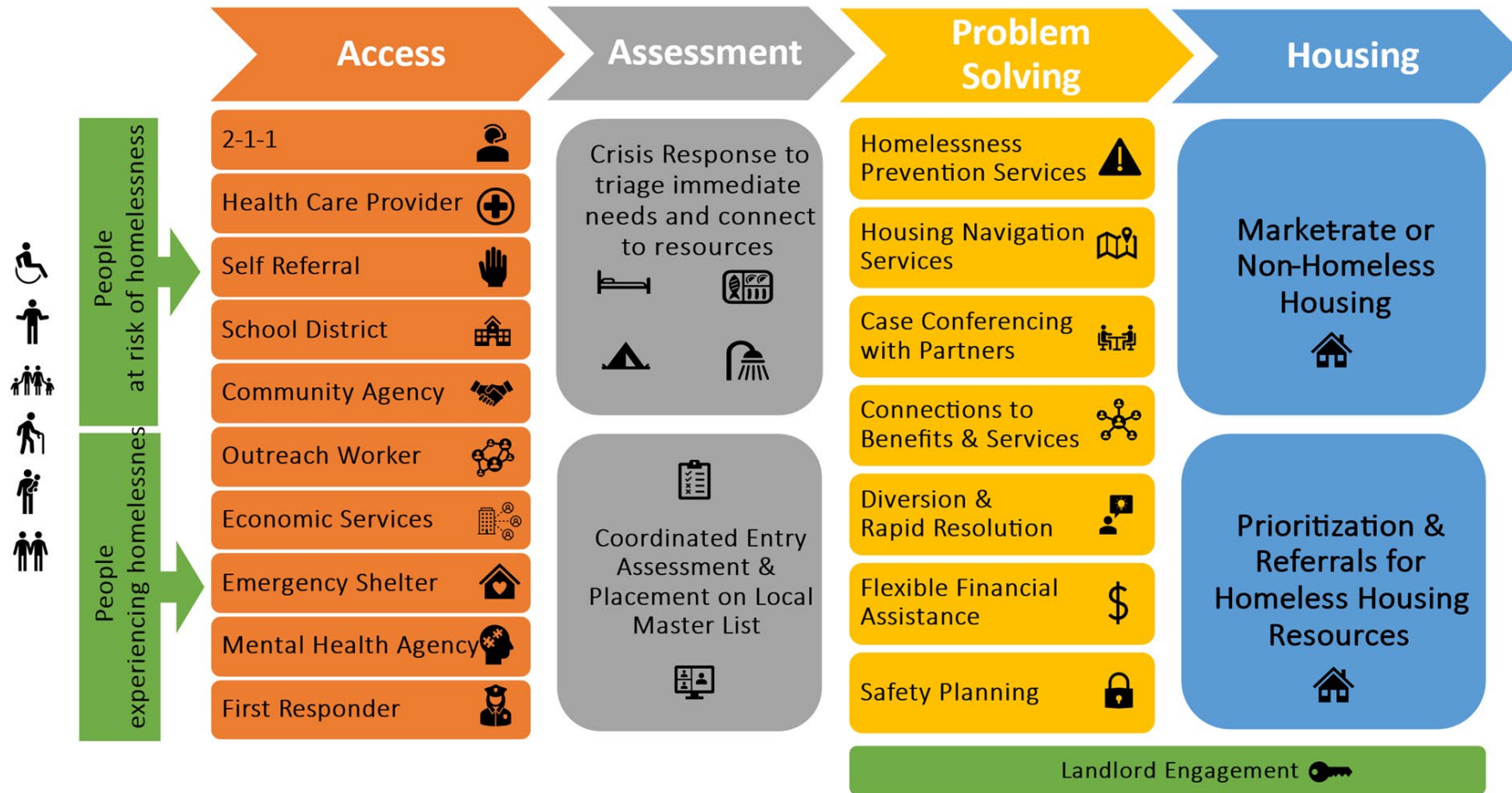
- AHS Field Directors and case management staff are continuing to engage individuals and communities to work on transitions and provide support.

## Collaboration:

- Cross-departmental coordination at AHS ensures clients are identified and screened for all program eligibility and shared care plans are developed.

# Coordinated Entry

## Connecting People in Housing Crisis to Housing Supports & Resources



# Transition Assistance – Sec. C.123(c)

<b>Activity</b>	<b>Allocation</b>
<b>Administrative Salaries, Data Collection and Management</b>	<b>\$224,576</b>
<b>Homelessness Outreach and Support</b>	<b>\$1,550,000</b>
<b>Panel Management</b>	<b>\$2,135,000</b>
<b>Shelter Expansion and Rapid Re-housing</b>	<b>\$2,664,000</b>
<b>Shelter Planning Grants</b>	<b>\$480,000</b>
<b>Hotel Security</b>	<b>\$630,000</b>
<b>Temporary Shelters for GA transition</b>	<b>\$2,316,424</b>
<b>Total</b>	<b>\$10,000,000</b>

# Residential Capacity

- As of February 22, **154** Residential Mental Health Treatment beds with **0** currently available.
- As of February 22, **63** Intensive Residential Treatment beds with **10** currently available.
- As of February 16, **96** Recovery Housing beds with **10** currently available.
- As of February 22, **245** Department of Corrections (DOC) Transitional Housing beds with **3** currently available.
- As of February 22, **2,873** Skilled Nursing Facility beds with **165** currently available.
- Disabilities Aging and Independent Living (DAIL) collaborated with the DCF Office of Economic Opportunity (OEO) to hold a webinar providing information to community partners on eligibility criteria for Choices for Care (CFC) and the process for accessing the different CFC options on February 12th.

# New Projects in Communities

## Expanded Emergency Shelter Capacity

New/Expanded:

- 2 seasonal shelters --> year-round (Burlington and Morrisville Districts), 31 households (9 new households)
- New & Expanded projects: 15 household Seasonal Shelter (Barre District); 4 household Young Adult Shelter (Brattleboro District); 24 household Shelter (St. Johnsbury District); 30 household Seasonal Shelter (Burlington District); 3 household emergency apartments (Springfield District); 5 household DV shelter capacity (Rutland District); 4 household emergency apartment for youth/young adults (Barre District)

In Development: 3 potential projects could add about 100 household capacity statewide (Brattleboro, Rutland and Hartford) between **State Fiscal Year (SFY) 2025 – 2026**

## Day Shelter Capacity

New/Expanded: 4 projects (Burlington, Barre, Rutland & Morrisville Districts)

## Street Outreach Expansion

DMH: 6 projects, many multi-agency (Burlington, Bennington, Barre, Brattleboro & St. Albans)