

Joint Fiscal Committee

July 30, 2024



Vermont
Housing &
Conservation
Board

Pollaidh Major
Director of Policy & Special Programs



Reid Commons, St. Albans



The Shelter at Moose River St. Johnsbury

OPENED JANUARY 2024

- Developer: RuralEdge
- Operated by: Northeast Kingdom Community Action
- 20 shelter beds
- Only existing emergency shelter for people experiencing homelessness in the Northeast Kingdom

Pearl Street, Montpelier

OPENED APRIL 2024

- Developer: Downstreet
- Five-bedroom permanently affordable rental home for refugees
- Purchased and managed by Downstreet
- Central Vermont Refugee Action Network (CVRAN) matches refugees to homes





Central & Main, Windsor BROKE GROUND MAY 2024

- Developers: Windham & Windsor Housing Trust & Evernorth
- 25 one- and two-bedroom affordable rental apartments
- Energy efficient new construction

Riverwalk Apartments White River Junction OPENED JUNE 2024

- Developer: Twin Pines Housing Trust & Evernorth
- 42 affordable units: mix of studio, one-, two-, and three-bedroom
- Eight units for households experiencing homelessness





Squire House, Bennington OPENED JUNE 2024

- Developer: Shires Housing
- Operated by: Vermont Foundation of Recovery
- Serves nine women in recovery and women in recovery with dependent children

Photo credit: Mark Rondeau, Bennington Banner

Lamoille Community House Hyde Park

OPENED JUNE 2024

- Developer: Lamoille Housing Partnership
- Lamoille County's first and only year-round operating shelter for adults experiencing homelessness
- 21 guest bedrooms, shared kitchen and office space for service providers
- On-site continuous support services



Vermont
Housing &
Conservation
Board



Bay Ridge, Shelburne BROKE GROUND JULY 2024

- Developer: Champlain Housing Trust & Evernorth
- Total of 94 new permanently affordable homes
- 68 affordable apartments for rent
- 26 affordable condominiums for sale

Housing Production Since 2020

2202 Rental Units

1842 new units

693 homeless units

452 units coming online in 2024

352 units coming online in 2025 (calendar)

Homeownership

209 new and buyer-driven homes

Shelter

17 Shelters served

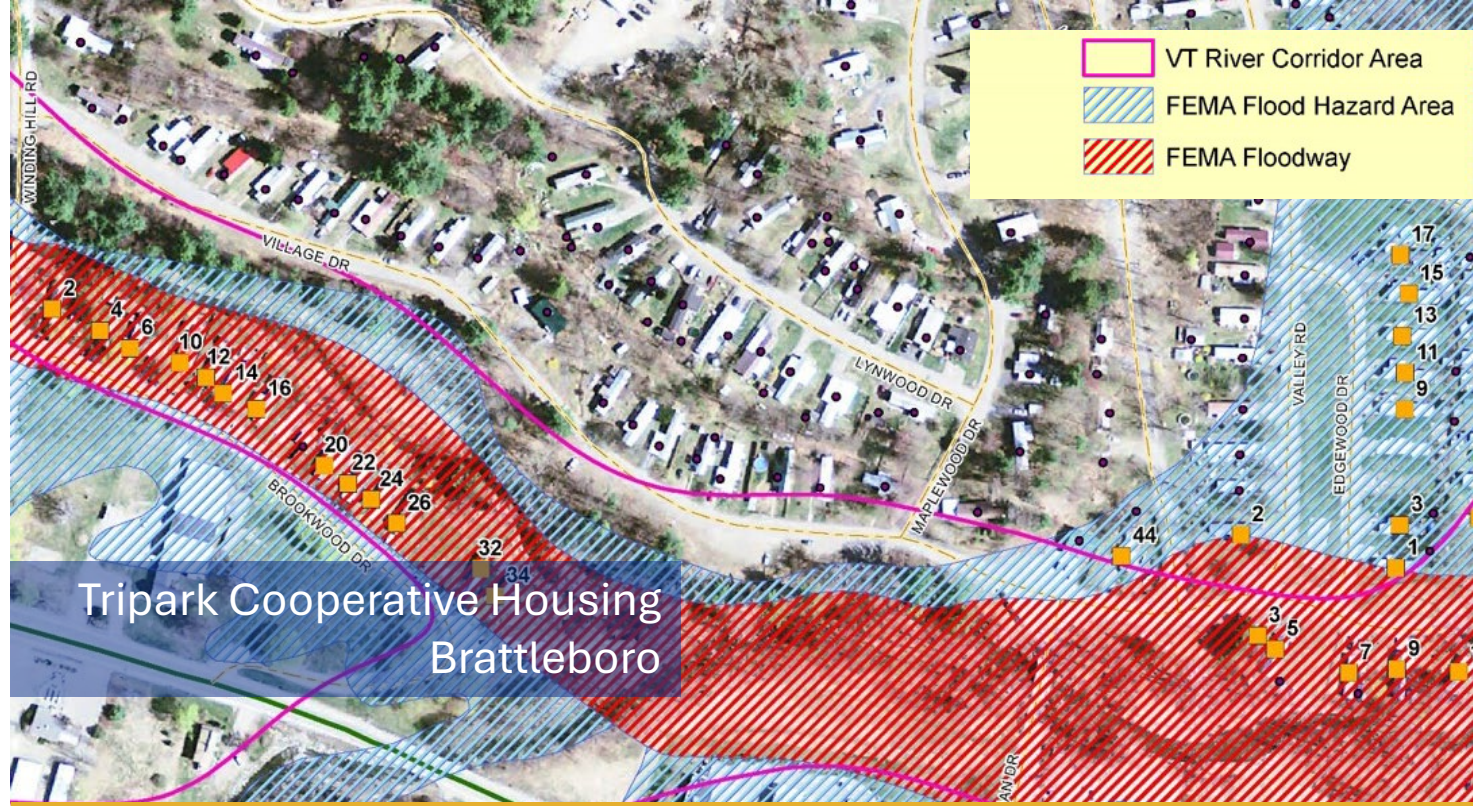
558 beds

226 new beds



Manufactured Home Communities

- 38 infill lots since 2020
- Over 35 years, VHCB has invested in over 50 parks supporting over 2,600 homes
- VHCB has applied in partnership with DHCD for \$15M from HUD PRICE to bring a new federal resource to VT's parks



Tripark Cooperative Housing
Brattleboro



Zero-Energy Modular home
for Willows Mobile Home Park, Bennington

Adding to Vermont's Rental Home Supply



2024

Mountainvale Apts.
White River Junction

2024

452 new units
164 homeless units
42 new shelter beds

Coming in 2025

352 new units
83 homeless units
20 new shelter beds

Alice Holway Drive
Putney

2025



2026 +

Stonecrop Meadows
Middlebury

2026 and beyond

376 new units planned
76 homeless units
6 new shelter beds

Affordable Housing Units Newly Leased to Households Experiencing Homelessness

Total units turned over in FY24 (July 1, 2023 - June 30, 2024)	1034
Of these units, number leased to households who experienced homelessness	383
Percentage of turned units leased to households experiencing homelessness	37%

1,000+

households experiencing
homeless that VHCB helped to
house in the past three years



2025 Housing Pipeline

Currently \$28.5 million in requests for:

- 1 shelter project creating 21 new beds
- 2 mobile home communities with 183 lots
- 2 homeownership projects creating 9 new homes
- 3 rental projects creating 67 new homes
- 2 projects preserving 56 affordable rental homes

We anticipate an additional \$39 million in requests this fiscal year to support:

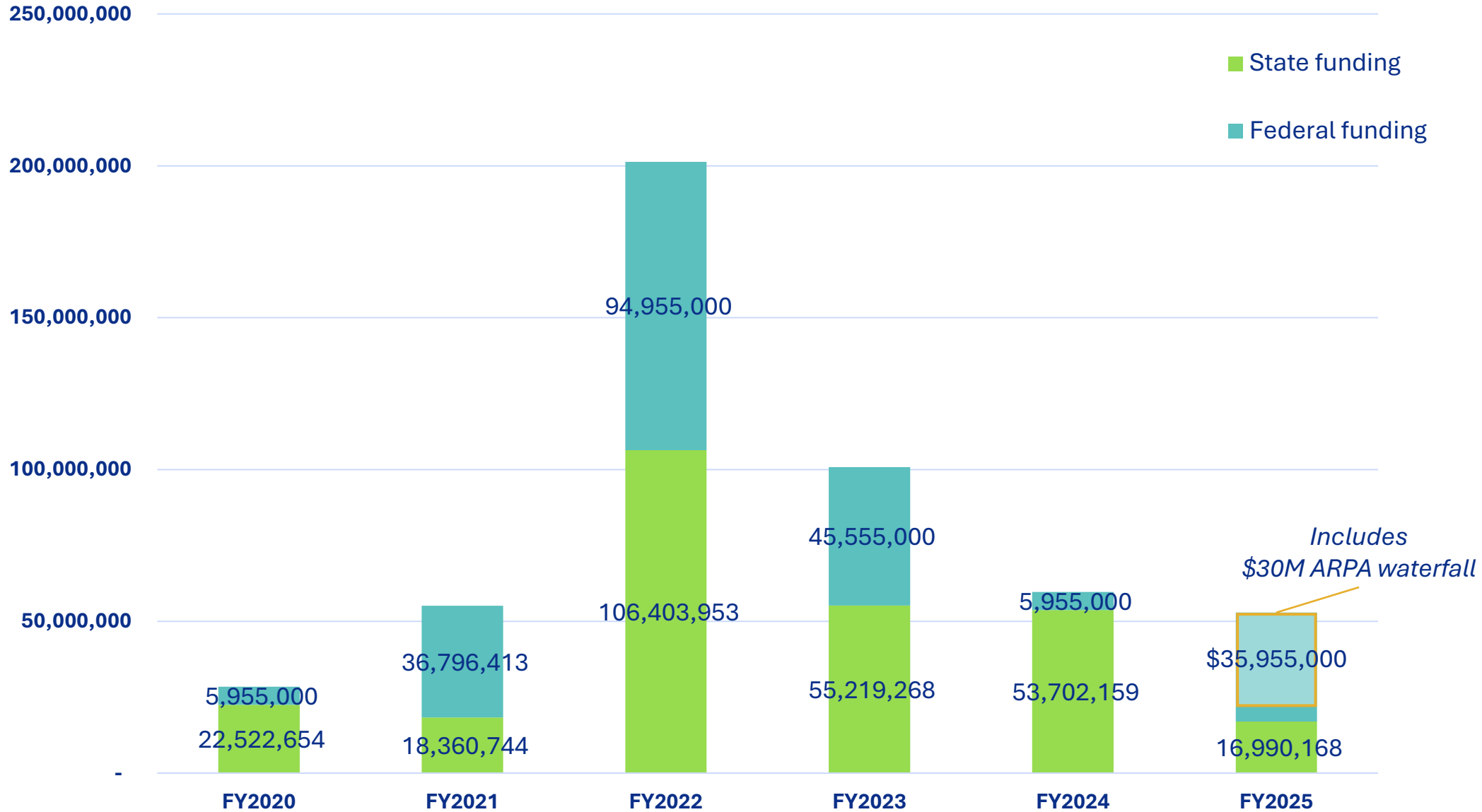
- The creation of 375 new homes, including a new recovery residence
- The preservation of 156 homes
- 59 units set aside for those exiting homelessness



Vermont
Housing &
Conservation
Board

The Chalet, Brattleboro

Housing Funding Since 2020



THANK YOU

Pollaidh Major

Director of Policy and Special Projects

p.major@vhcb.org

